

# SPSA Regional Landfill

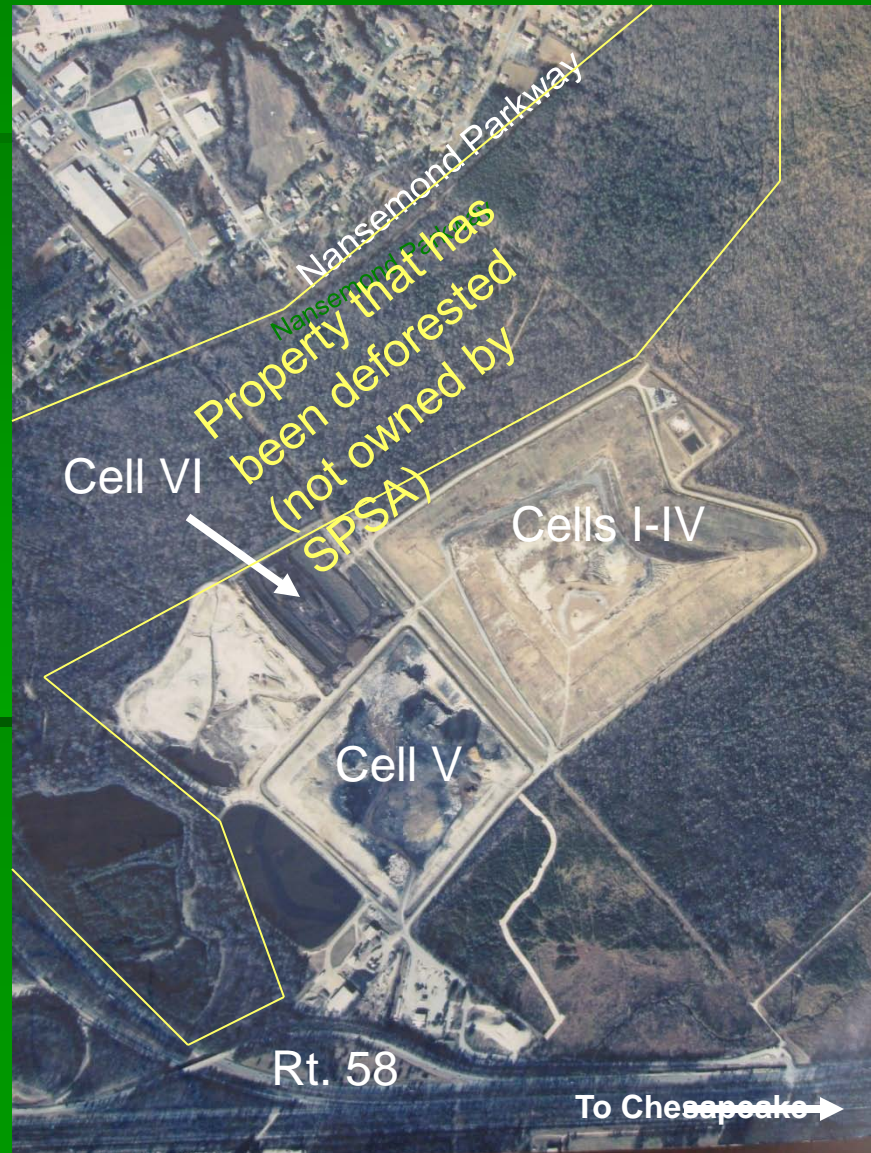


# Landfill Aerial

Cells I – IV account for 103 disposal acres, Cell V is permitted for 43.6 disposal acres and cell VI is permitted for 45 disposal acres.

SPSA completed closure of Cells I-IV in the summer of 2009 and Cell V currently has no exposed waste.

SPSA and it's LF Gas contractor continue to monitor and maintain compliance for the Regional Landfill.



# What has SPSA Done?

1. Reviewed and supplied Suffolk staff with a sulfide monitoring report prepared by HDR Engineering and approved by DEQ
2. Invited DEQ to visit the facility – site visits on 4 occasions (No concerns were noted at those times.)
3. Tracked complaints, monitored, & reported to appropriate agencies
4. Conducted a voluntary monitoring program w/ DEQ guidance to ID odor sources
5. Discovered multiple other sources of possible malodor and these were provided to DEQ
6. Cover trash at a frequency and amount better than what is required by state law
7. Reduced the size of the working face of Cell VI at night
9. Installing & began testing of odor suppression system
10. Authorized landfill gas contractor to begin installing a temporary gas collection system in Cell VI.

# Compactor in Cell VI



Landfill cover material applied

# Cell VI Working Area



Looking toward  
Nansemond Parkway

Truck



Daily cover installed on smaller working face

# Tripod for Odor System

The odor suppression system has recently been installed at the regional landfill and is still being tested. This system was previously used by SPSA at the SPSA operated Compost Facility at the VB Landfill.



# THE SALE OF THE WASTE TO ENERGY SYSTEM

With this sale, the Regional Landfill will no longer be accepting municipal solid waste or commercial/business waste.

All non-processible waste (waste which can't be burned) will be taken by Wheelabrator Technologies (the buyer of the WTE System) to a non-SPSA landfill.

All Processible waste will continue to be taken to the RDF Plant in Portsmouth to be prepared to be burned.

Waste which will be going into the landfill will be such things as dirt, fines, some construction and demolition debris ... generally non-odorous materials. The new amount of such waste will be approximately 75% percent less than what did go into the landfill,

Once the landfill gas contract is complete for Cell VI, a permanent landfill gas collection system will be constructed thus capturing the landfill gas for a beneficial use.

**This sale of the WTE Facilities is expected to be completed by May 1st of this year.**